



# Ossiflex Bone Membrane Closes Riley's Oronasal Fistula

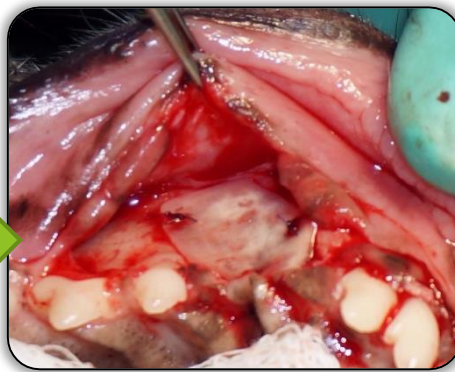
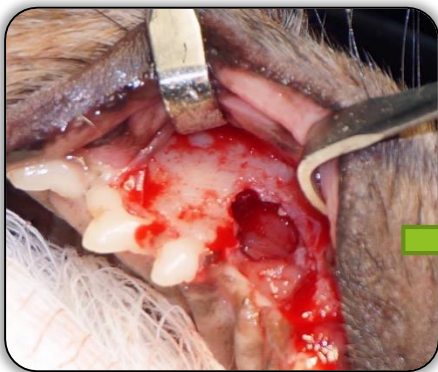


## Closure of an ONF in a canine

Riley presented with an oronasal fistula (ONF) secondary to the surgical extraction of her maxillary canine tooth by a referring veterinarian; purulent discharge can be seen in the defect.

An Ossiflex Bone Membrane was used to cover the large bony defect left by the fistula.

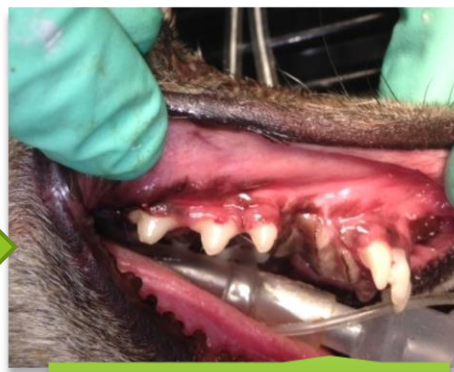
**Suturing the Ossiflex ensures stabilization and ensures the membrane will remain in place following flap apposition, as the surrounding tissue heals.**



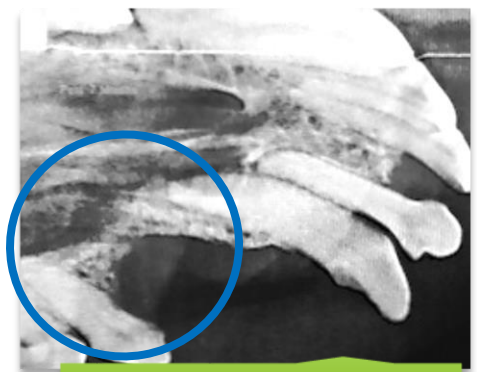
At seven months post-op, the soft tissue covering the site is solid and firm to the touch, and a "bridge" of new bone can be seen radiographically over what was previously a large, bony defect (see below).



Immediate Post-Op



7 Mos Follow-Up



7 Mos Follow-Up

**Ossiflex is a demineralized cortical bone sheet, ready to cover your largest bony defects!**

Available in five sizes; thin enough to cut and suture, yet strong enough to resist pressure and provide an immobile substrate for bone and soft tissue regeneration.